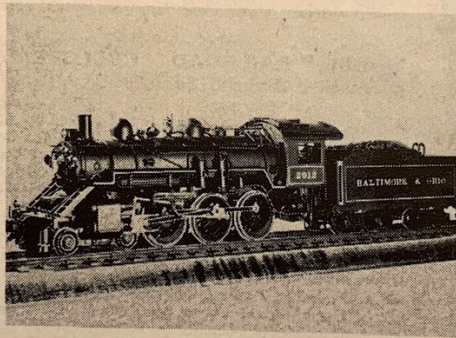


BULLETIN

20th ANNUAL

EXHIBITION



1950

*New York Society
of
Model Engineers, Inc.*

What books to read

Books can help immensely in building a model railroad. They answer questions, furnish plans, and stimulate creative thinking. We list here some of the best, with descriptive comment. They may be purchased from hobby shops or direct from The Model Railroader, Milwaukee 3, Wis.

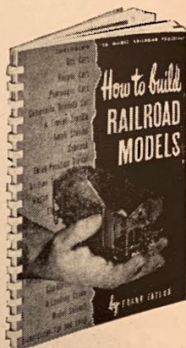


TRACK AND LAYOUT, by A. C. Kalmbach, \$2.

Designing track plans for your own model railroad is made more enjoyable by reading this capable guide to layout and construction of benchwork and track, and extensive treatment of electrification and wiring. "Track and Layout" enables you to incorporate originality and individualism in your layout and yet maintain the essentials of good model railroading.

HOW TO BUILD RAILROAD MODELS, by Frank Taylor, \$2.

This book contains a series of practical step-by-step construction articles with complete plans, photos and drawings for building cars and structures. The chapters include articles on box cars, hopper cars, passenger cars, gondola, small station, station accessories, 3-position signal, caboose, timber trestle, refrigerator car, grade crossings, track switch, double crossover, tank car, gas-electric car, loading crane, model culvert, transformer car, etc. 120 pages.



MODEL RAILROAD CYCLOPEDIA, by A. C. Kalmbach, \$4.50.

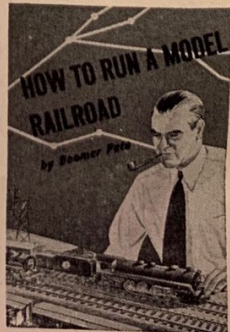
Aptly entitled "The Book of Plans," the Cyclopeda features hundreds of prototype drawings and photos, including everything from locomotives, freight and passenger cars to buildings, bridges, rights of way, and signals . . . practically every type of railroad equipment. Since its first edition in 1936, the Cyclopeda has always been a "best seller" and is the standard reference book on model railroading. Compiled by the publishers of THE MODEL RAILROADER, the sixth edition contains in addition to hundreds of prototype plans, articles on model locomotive, car, and trolley construction, trackwork and signaling; charts of signal aspects and indications, piping and parts of steam locomotives, standard signal circuits, model railroad gradients, rail sizes, switch ties and sizes; diagrams of N. M. R. A. standards, track and structure clearances and valve gear parts. 200 pages plus 15 large folding plates.

HOW TO RUN A MODEL RAILROAD, by Boomer Pete, \$2.

Dedicated to "how to have fun with a model railroad after it is finished," this practical volume is the only complete book on operating methods for model railroaders. It tells how to operate the individual train so it runs more smoothly, how to make up trains so they are more like the real thing, how to switch freight and coach yards so trains are made up with the least lost motion, and how to run trains according to timetable and train order. Planned for the individual model railroader as well as for the club, several methods of operating are described. Some methods are practical for one or two people, others only for larger groups. The author describes nothing with which he hasn't had personal experience, and, in fact, as one of the real old-timers of model railroading he devised many of the plans described.

Diesel Plan Packages with lifelike color pictures, ea. ---\$1.50

Pack No. 6-7 includes 41 different full-color pictures of freight and dual-purpose diesels with descriptive captions and road heralds. Scale plans for HO and O gauge Electro-Motive F-3 A and B units, plus plans for HO gauge Electro-Motive FT A and B units. Pack No. 8-9 has 29 different full-color pictures of passenger diesels with descriptive captions and road heralds. Scale plans for HO and O gauge Electro-Motive E-7 A and B units, plus plans for HO Electro-Motive E-6 A and B units.



Books ordered from The Model Railroader will be sent postpaid!

N. Y. S. M. E. BULLETIN

Published in the Interest of Modelmaking by

NEW YORK SOCIETY OF MODEL ENGINEERS, Inc.
LACKAWANNA TERMINAL HOBOKEN, N. J.
Telephone: HOboken 4-9120

Organized 1926

Volume 13

No. 1

The officers and members of the New York Society of Model Engineers extend a hearty welcome to those visiting our 20th Annual Exhibition. We hope this visit will give you a better understanding of the detailed care, patience, and skill required to make even the most simple model. We also hope you enjoy the outstanding models we have assembled from a number of fields for your inspection.

This Exhibition marks one of the milestones in the history of the New York Society of Model Engineers, since it is the 20th occasion on which the Society has invited its friends to view the products of its handiwork. Similar exhibitions have been held annually in the past, except for the first few years of our existence and during the periods when we were moving our quarters. This Exhibition is one of the largest which have ever been held by the Society.

Membership in the Society is open to those who have a genuine interest in some phase of model building and who are willing to devote some of their time to our cooperative work. Membership dues are nominal, only \$10.00 a year.

If you are interested in joining in our activities, additional details and information regarding membership may be obtained at the office or from any member.



LIONEL

**in celebration
of its
Golden Anniversary in
1950**

**will present
some extraordinary
new model railroad
features**



The Union Connecting Railroad

The Union Connecting Railroad now under construction by the New York Society of Model Engineers is an "O" gauge, $\frac{1}{4}$ " scale model railroad system and is the fourth such system to bear that well-known name.

The name "Union Connecting Railroad" was selected as the name because it was non-sectional in character and because equipment and rolling stock representing railroads from all parts of the world may be seen operating over its tracks.

This new UCON has been especially designed to fit into its present location. While there have been minor changes in the detail plan as construction progressed, the basic plan is unchanged from that which was adopted in 1947. Construction work has been completed on the main line which consists of a minimum of two tracks extending between the two terminals for a distance of over 500 feet.

During the past year, many passing sidings have been added as well as the alternate main line; this additional construction amounted to 700 feet of track and 45 additional switches and involved the use of approximately 17,000 ties, each of which had to be cut from $\frac{1}{16}$ " plywood, and 70,000 spikes to fasten the rails to those ties. Track switches require an average of about five hours per switch to construct. When the construction of the framework, baseboard, trackboard, and the wiring of the new portion of the railroad, together with the designing and construction of the new control boards is added to this track, it is not difficult to understand why it takes approximately 100 man-hours to complete each foot of the railroad. More than 30,000 man-hours of work were completed on the railroad during this past year. All of this work was done during the members' spare time on Wednesday evenings and Saturday afternoons.

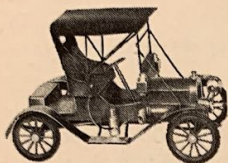
The present temporary main terminal yard was originally built as the Waverly Yard and used for the Union Connecting Railroad at the Society's New York headquarters. One of the outstanding features of our proposed new terminal is the partially completed model of the Lackawanna Railroad Passenger Terminal Building at Hoboken. This model is fabricated almost entirely of cardboard and presents an excellent example of the detailed care, patience, and skill required to produce a model. One man has spent one and a half years to date on this model, and it is estimated that another two years will be required for its completion.

An extensive marine model program is planned as an adjunct to our railroad. The two partially completed models of Lackawanna ferry boats will form the nucleus of an entire fleet of railroad marine equipment.

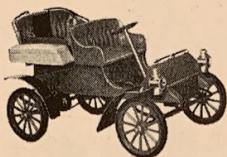
The mountain, a part of our proposed scenic program, will be eventually a representation of the Delaware Water Gap. This scenic program, of necessity, must be delayed pending the completion of all track work.

It is anticipated that three more years will be required for the track work on this new Union Connecting Railroad. More than three additional years will be required after completion of the track work to construct all of the planned scenery, signaling, and control circuits.

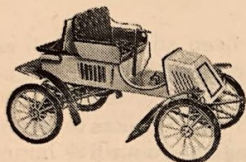
Now Everyone Can Have Authentic Antique Automobiles—Simply by Collecting Hudson Miniatures' "OLD TIMER" Auto Kits



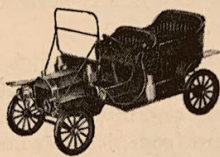
1911 Maxwell
7½" long. \$2.50



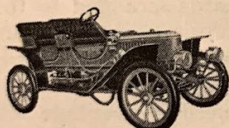
1903 Model "A" Ford
6½" long. \$2.50



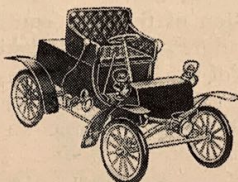
1903 Rambler
6½" long. \$2.50



1909 Model
"T" Ford
8" long. \$2.95



1909
Stanley Steamer
8" long. \$2.95



1900 Packard
6½" long. \$2.50



1904 Oldsmobile
6" long. \$1.95



1910 Model "T" Ford
8" long. \$2.50

If you are among the hundreds of auto lovers who have been impressed with the romance of the early days of the automobile, but feel that the collecting of vintage cars is a luxury you can't afford . . . then you've got a pleasant surprise coming.

Hudson Miniatures' "OLD TIMER" Auto Construction Kits are authentic, ¾" scale models of famous early autos . . . easily assembled to make outstanding collector's items. Here is all the detail and color of the early auto, at prices every hobbyist and collector can afford.

Shown at left are the eight models currently available. Other famous models will soon be in production.

See them at your favorite hobby store, or write to us direct.

Sorry, no C.O.D.'s. Please include 25c for postage and handling

Scranton Hobby Center

315 Adams Avenue

Dept. 17

Scranton 10, Pa.

Railroadiana

The Railroadiana collection of the New York Society of Model Engineers has grown considerably during the past year.

Our exhibit of Illuminated Tail Signs is the largest such collection to be seen anywhere. It is, however, by no means complete.

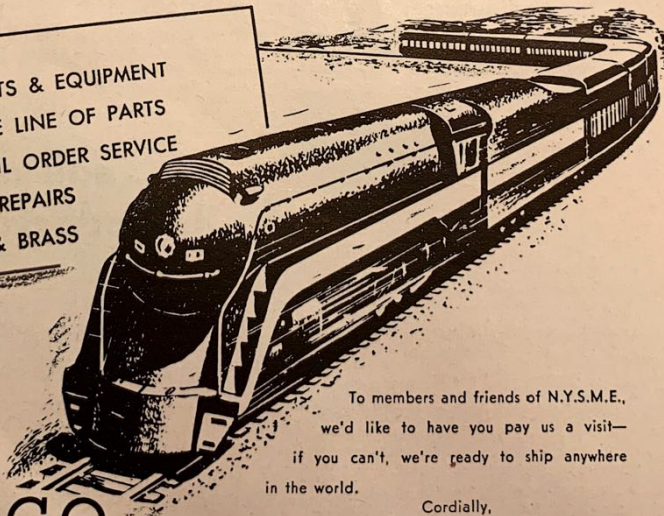
We know that many of these signs will recall memories of trips which you, our visitors, have enjoyed in the past. Some of these signs are the mementos of famous "name" trains which are no longer running.

Additional information regarding any of these Illuminated Tail Signs may be obtained from members of the Society.

IT'S JAMCO

for

- LATEST KITS & EQUIPMENT
- COMPLETE LINE OF PARTS
- FAST MAIL ORDER SERVICE
- ENGINE REPAIRS
- TOOLS & BRASS



To members and friends of N.Y.S.M.E.,
we'd like to have you pay us a visit—
if you can't, we're ready to ship anywhere
in the world.

Cordially,

ED "SPIKE" DAWSON

Member #44 N.Y.S.M.E.

JAMCO

90-04 168th ST., JAMAICA 3, N. Y.

Please Patronize Our Advertisers

So you want to be a model railroader

We suggest . . .

you see your local hobby dealer first. He is the man who can give you full information about the hobby and discuss your problems "first hand."

If you do not know his location, see your local telephone book for his listing under "Model Construction Supplies."



Ask your dealer about the **MODEL RAILROADER** magazine

It has been the No. 1 source of model railroad information for over 16 years. It is jam-packed with pictures, construction plans, track diagrams, and operating ideas. The interesting and up-to-the-minute advertising covers the entire field of model railroad parts and supplies.



. . . and our **Introductory Booklet**

It's an informative little book that tells and shows how you too can start in this fascinating hobby. Ask for "Model Railroading for You."

KALMBACH
Publishing Company
1027 N. 7th St.
Milwaukee 3, Wis.