

RAIL NOTES: NEW FLYERS

The Burlington Expands Its Fleet of Zephyrs —A Model Show

By WARD ALLAN HOWE

EXPANSION of a fleet of stainless steel Diesel-powered Zephyrs by the addition of three more Budd-built trains this year is planned by the Burlington, which will then have twelve of these speedy flyers.

The tenth in the Zephyr series is now under construction and will be placed in service in the Spring on a daily round-trip schedule between Lincoln, Omaha and Kansas City. It will replace the Pioneer Zephyr, which will be assigned to another division. Residents along the route will compete in a contest to name the new train.

The eleventh and twelfth members of the fleet to be known as the Texas Zephyrs will operate overnight between Denver, Fort Worth and Dallas, each having both Pullmans and chair cars. At Dallas there will be direct connection with Zephyr service to and from Houston, and this arrangement will cut the travel time between Denver and the Gulf of Mexico by five hours southbound and ten hours northbound. A marked increase in Texas-Colorado rail travel is expected to follow introduction of these trains.

* * *

Two new fourteen-car streamlined "Daylight" trains are now in operation between San Francisco and Los Angeles on the Southern Pacific, replacing the original Daylights which are being overhauled. The new Pullman-built trains cost \$1,000,000 each and have several new features, including a three-car articulated dining unit seating 152; a public address system, fluorescent lighting, and baggage elevators. The elevators are electrically operated devices with outside doors at the end of each car which do away with the necessity of carrying luggage through the car vestibules.

* * *

Report on Streamliners

Lightweight, high-speed trains have produced substantial earnings and much new traffic for every railroad placing them in service, according to a report by Coverdale & Colpitts, consulting engineers. Included in the survey were such popular Budd-built streamliners as Seaboard's Silver Meteor, the Champion of the Atlantic Coast Line and Florida East Coast, Santa Fe's El Capitan and the Burlington's Denver Zephyrs. The latter trains earned \$2,077,444, the greatest gross revenue of any reported on in the year ended June 30, 1939.

* * *

The Navajo, long a well-known Santa Fe train between Chicago and California, has been discontinued and the California Limited shifted to its schedule. The Navajo began service on Oct. 1, 1915. Fast Diesel-electric streamliner service between Chicago, Tulsa and Oklahoma City is another new Santa Fe development. Leaving Chicago at 9:30 A. M., one is in Tulsa at 10:10 P. M. and Oklahoma City at 12:30 A. M.

* * *

For the first time in the history of American railroad travel, passengers can go from New York to Mexico City without change of cars. Through Pullmans operated by the Pennsylvania in cooperation with the American Express Travel Service leave every Saturday and reach the Mexican capital on Tuesday afternoon.

* * *

Model Engineers Show

The twelfth annual show of the New York Society of Model Engineers is now in progress at 152 West Forty-second Street and will continue through Feb. 24, Sundays excepted. Hours are 1 to 10 P. M. Besides the many models on display, the society's Union Connecting Railroad is an outstanding attraction. Last year, 16,000 attended the exhibition.

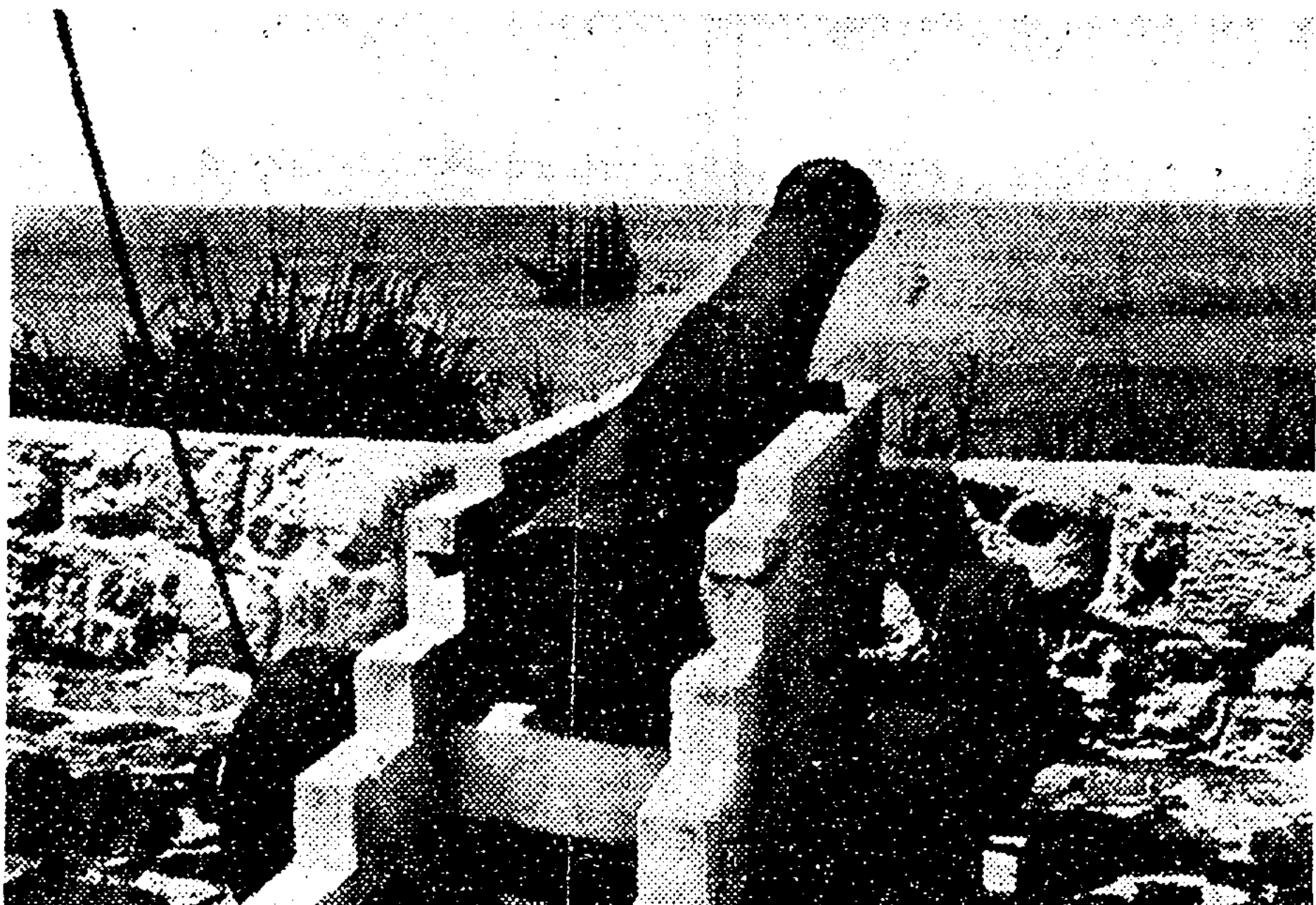
* * *

New laurels for the Iron Horse as a hobby horse are reported by the New Haven, which has been a leader in organizing novelty trains. During 1939 its trains of this type carried 14,000 fun-seekers more than 28,000 miles. Ski, camera, cycle, fold-boat, husking-bee and off-the-beaten-track or "thrill" trains all attracted good patronage and will be continued this year.

* * *

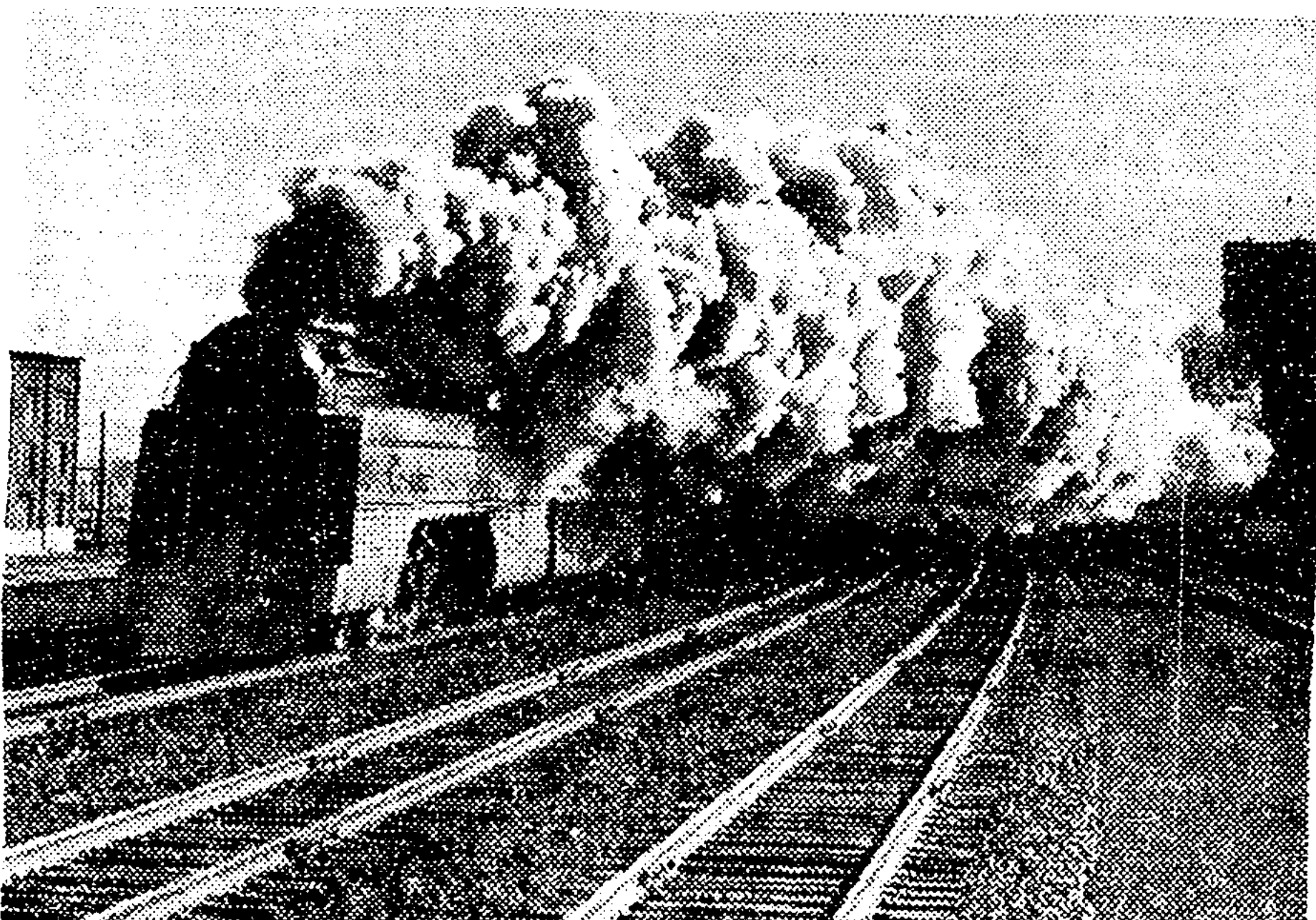
Miscellaneous Items

A new speed train called the Firefly has been put in service by the Frisco between Kansas City, Tulsa and Oklahoma City. . . . The Lackawanna has scheduled a special ski train to Norwich, N. Y., leaving every Friday night. . . . Monthly institutional advertising by the Illinois Central in 500 newspapers along its lines is now in its twentieth year.



Hendrik de Leeuw

The gun that fired the shot from St. Eustatius on Nov. 18, 1776.



Ward Allan Howe

Jersey Central-Reading's streamlined Crusader photographed on a frosty morning near Elizabeth, N. J. Exposure, f.5.6, 1/400th sec.