

New York Society of Model Engineer's BULLETIN

VOL. 2

FEBRUARY, 1936

NO. 1

LARGEST COLLECTION OF AMATEUR MODELS SHOW HOBBYISTS' SKILL

Fast passenger trains careen around the track at breathtaking speed, freight trains rumble and roar through the tunnels and up heavy grades; signal lights blink and flash as terse orders hurtle through space on telephone wires—the Union Connecting Railroad is in full operation.

To the cacaphony of railroad noises the gasoline engines, some smaller than a matchbox, add their throaty roar. These midjet wonders of the engine builders' art undertake the herculean task of driving sleek and polished racing boats through the water at speeds that stagger the imagination of the most ardent racing fan.

Steam, the power which brought about the present machine age, is harnessed to the modelbuilders' desires. Generated in special boilers at pressures exceeding twenty tons to the square foot, its eneregy drives racing boats, sends locomotives chugging up the track carrying many live passengers who completely dwarf their means of locomotion.

To attempt to catalogue all the individual models on exhibition would be an almost unending task. It is easy,

THE UNION CONNECTING RAILROAD

The Union Connecting Railroad consists essentially of three loops interconnected by switches a yard and auxiliary tracks.

The power for the system is derived from a .5 KVA rotary converter and a transformer with taps so that various voltages may be used. In addition to the converter, a motor generator set is used to supply power for the signal system.

The focal point of the system is "SK" interlocking. Here is installed a model of a Union Switch and Signal Co. Type F interlocking. The switches are powered with electric motors and the usual signal control circuit is used. The chart or illuminated diagram permits the operator to know the exact location of a train even though it is out of his range of vision.

The power is controlled by a device known as the "Engineers Control Board", an invention of several members of the Society. Here are grouped the switches which put the power on the third rail and the signal repeaters. When the towerman clears the signal the repeater on the Engineers Control Board clears and then the engineer works the power switches accordingly.

Continued on page 9

Continued on page 4

EXHIBITION GUIDE

INTERLOCKING EQUIPMENT

G. R. S. type All Electric Interlocking
Machines, Color Light Signals, Switch
Mechinisms Electric and Mechanical.

Also Mechanical Interlockings.



for particulars write to the

*Model Switch &
Signal Company*

DEPARTMENT M

374 FULTON STREET
BROOKLYN :: N. Y

Chatting with the Trade

The A. C. Colby Machinery Company, 183 Centre Street, New York City, has on display in their show room a genuine South Bend 9" x 3' Workshop Precision Lathe at only \$75 without the motor drive and \$98.25 complete. They also have a scheme for buying the lathe on the installment plan with no down payment and three years to pay at only 5%.

Superior photographs for the particular collector or model builder are listed in a big catalog issued by the H. O. Bailey Studios, 811 Cherry Street, Philadelphia. This catalog is free.

The Modelmaker Corporation of Wauatosa, Wis., publishes two magazines which are exclusive in their respective fields. The Modelmaker covers all types of working models, and the Model Railroader is exclusively model railroading.

For a real die cast fully automatic coupler in 17/32 scale you should try Warren Fleenor, Stafford, N. Y. They are really excellent couplers—and only 25c each.

For brick and stone papers, in fact for anything in the scenery line, you should send 10 cents for the samples of materials and the catalog which is being issued by the International Midland, 14-S Ellsworth Avenue, Yonkers, N. Y.

For really good model cars and trucks try Samuel Shaw, 541 Penn Avenue, Drexel Hill, Pa. He has some top notchers! "Nuff sed."

Mariners Engaged in Intensive Model Speed Boat Reserches

Gas Engine Development Rapid

The Marine Division of the Society has, from the inception of the organization been primarily concerned with the development of the miniature speed boat.

This research has included a study of hull types and an intensive work on the gasoline engine. One of these experiments having far reaching consequences was conducted by building two identical hulls and powering them with various types of engines.

Out Door Racing in Summer

In the spring and summer months, outdoor racing of the group is done on Conservatory Lake in Central Park in the City and numerous informal race meets are held with other clubs in the

Metropolitan area.

The climax of the outdoor season is the Walter Elliott Memorial Race held early in September. This race is held in honor of the late Walter Elliott who was an early pioneer in the game and for years the undisputed champion of the Society.

A large testing tank was built so that boats could be tested under conditions closely approximating those of actual racing. This tank together with a test bench for the gasoline engines enable the design of both the engine and hull to be accurately calibrated and thoroughly inspected in the winter months when outdoor racing is impossible.

Ample provisions have been made for those interested in sailing craft and the decorative type of models and many fine examples of these types of the shipbuilders art have been constructed.

Now!
BUY A LATHE

A Genuine SOUTH BEND
9" x 3' WORKSHOP
PRECISION LATHE

\$75⁰⁰
Less motor drive
All Prices F. O. B.
South Bend, Ind.

NOTHING DOWN
3 Years to Pay
5% Lowest Interest Rate in History

New 1936 Model
8 Different Drives
4 Bed Lengths



Weight 510 lbs. Crated

9" x 3' South Bend "Workshop" Precision Lathe complete with Horizontal Motor Drive, 1/4 H.P. Reversing Motor, Reversing Switch and **\$98²⁵**

Practical for all machining operations in metals, woods and other materials. Especially recommended for home shops, electrical and repair shops. 38 attachments available.

Visit our display room--see this lathe in operation--learn how easy it now is to own one.

A. C. COLBY MACHINERY COMPANY

183 Centre Street, New York City ♦ Phone CAnal 6-4140

Mi-Loco Runs True to Form

For realism, detail and performance see the display in booths No. 1 and 1A. Mi-Loco with their Truscale equipment are just about tops in the model railway supply field. Their locomotives, they claim, will make a scale speed of 300 miles an hour. Lee B. Green uses the same methods of construction in his models as the builders of actual railway equipment.

The Miniature Locomotive Company is located at 14558 Lorain Avenue, Cleveland, Ohio.

The Union Connecting Railroad

Continued from page 1

At towers "TU" and "DB" the same method of operation is used but here some of the switches are hand thrown.

A telephone line runs between all the towers and into the yard and enginehouse. This line is used for train

SHIP MODELS

Blueprints with directions on How-to-Make many old-time Clipper Ships. Battleships and privateers. Also hundreds of fittings in brass, white-metal and boxwood. Every tool and all woods for the model-maker. Send 15 cents for our illustrated catalog. A credit slip will be issued for the catalog charge.

Gene's (Dept.E) 510 E. 11 St., N.Y.C.

HANDEE

Tool of 1001 Uses

Grinds, routs, drills, carves, sharpens, cuts, engraves. Fits the hand perfectly. Weighs 1 pound. For use at home, in the shop or take to the job. Do away with slow hand work! A. C. or D. C. 110 volt, 13,000 r.p.m.



Plug in any light socket

\$10.75

and up post-paid U.S.A. with 3 accessories Free. Order today.

Order on 6-day trial. Satisfaction guaranteed. Ask for FREE booklet.

New

**MASTER CRAFTS-
MAN'S SET**

17 useful accessories to grind, drill, polish, sand, cut, carve, engrave, etc. Prepaid \$5.00

dispatching and as a message wire.

The bridges are driven by shunt motors and are equipped with micro-matic switches and mercury switches so that they are automatic in operation, once they have been started either up or down.

Although relatively simple to operate, the system contains miles of wire and many complicated electrical circuits, but we are not yet finished.

ATTENTION MODEL CLUBS

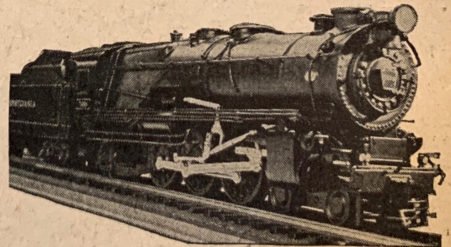
Have your Exhibition Guide produced at little or no cost to you! Yes, we have a plan that will save you money.

For more information write to

THE DEWEY PRESS

374 Fulton Street, Dept. EG, Brooklyn, N. Y.

For Realism, Detail and Performance See Mi-Loco



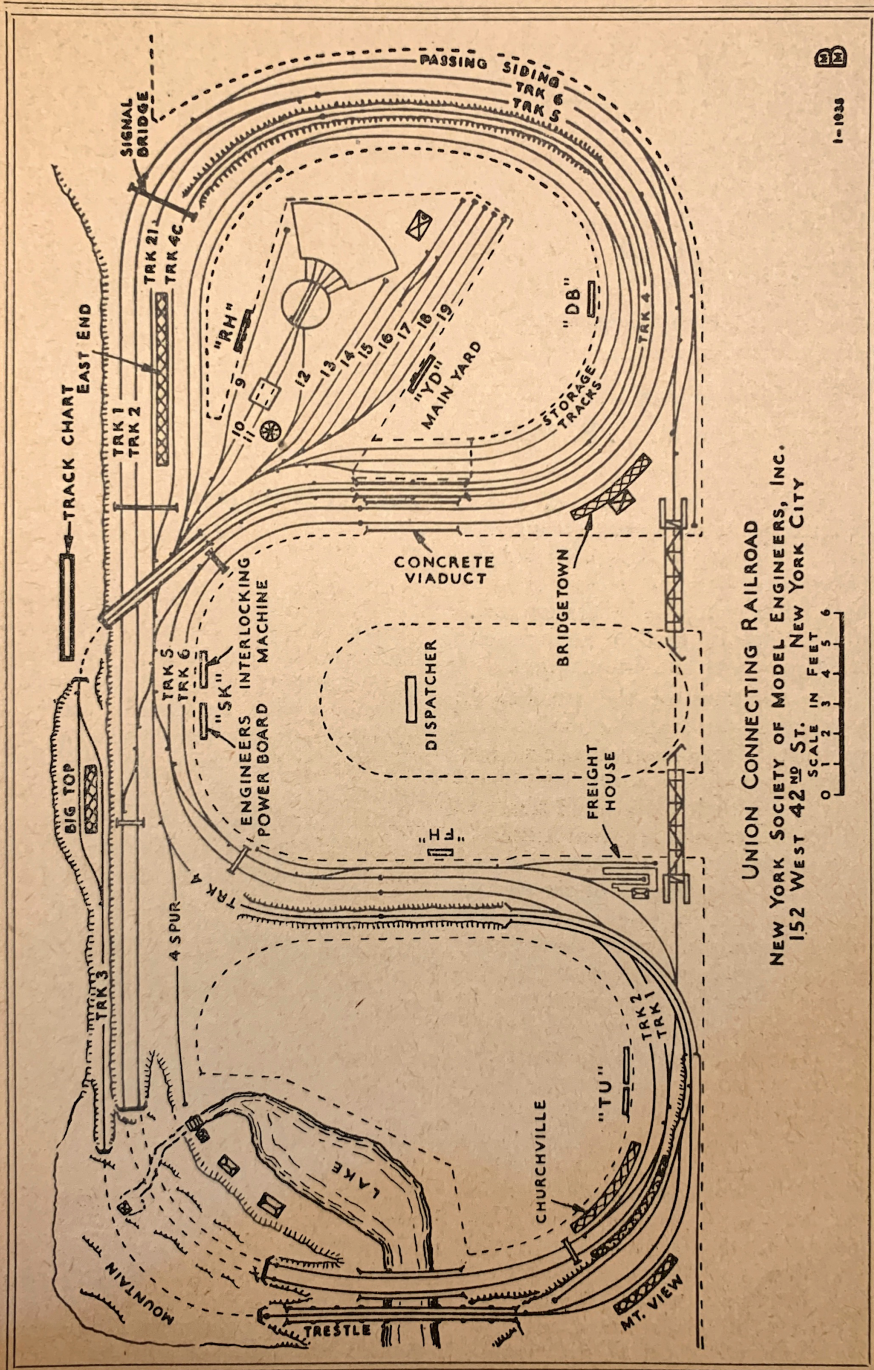
MI-LOCO Truescale Models and Track Equipment are exhibited in Booths Nos. 1 and 1A. For a real thrill see these performing marvels that are just like the "big fellows".

The Miniature Locomotive Co.

14560 Lorain Avenue ♦ Cleveland, Ohio



CHICAGO WHEEL & MFG. CO., 1101-C Monroe Street
Chicago, Ill.



UNION CONNECTING RAILROAD
NEW YORK SOCIETY OF MODEL ENGINEERS, INC.
152 WEST 42ND ST. NEW YORK CITY

SCALE IN FEET



1-1935

N. Y. S. M. E. BULLETIN

Published in the Interest of Modelmaking by

New York Society of Model Engineers, Inc.

Suite 328 • 152 West 42nd Street • New York

Telephone LOnacre 5-8290

C. SMALL Editor-in-Chief

S. FERGUSSON Editorial Asst.

M. BROWNSTEIN Editorial Asst.

P. BIDONDE Circulation Mgr.

Why Membership in the N. Y. S. M. E. ?

The New York Society of Model Engineers is a non-profit organization whose purpose is to gather model-makers together and provide a place where they can meet others interested in the same or kindred subjects and exchange views and information.

The vocations of the membership body are as varied as the models they construct. Doctors, toolmakers, locomotive engineers, students and musicians forget their daily profession and submerge themselves in their hobby.

In the Society the beginner may find experts in every branch of modelmaking ready and willing to help him solve his problem. From a complicated electrical circuit to the best method of milling spiral flutes, someone can be found that has done the job before. This accumulated experience represents one of our most valuable assets.

The Society has two major internal divisions, the Railroad group and the Marine group. There is no formal division of membership, but the members gravitate to that group in which their major interests lie. This flexible type of organization is well suited to the modelmaker whose interests shift as his field of endeavour changes.

The equipment at the clubrooms is

available to properly qualified members without additional obligation. This equipment ranges from the Union Connecting Railroad to the lathe and drill-press.

Various group activities are carried on. The railroad group operates the railroad every Wednesday night following standard railroad rules. The marine division has various competitions and races, and the publishing division issues the Bulletin.

Those requiring additional details of membership should write the Secretary.

Society Members

Welcome Visitors

The officers and members of the Society extend a hearty welcome to those visiting our show. We hope that your visit will give you an insight into what modelmakers are accomplishing. We have assembled the best models from every field for your inspection.

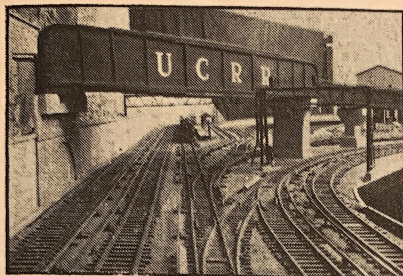
Should you require aid or help with a problem do not hesitate to call on one of our members for assistance.

Bulletin Staff

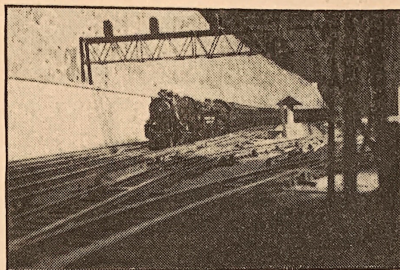
Felicitates Members

The BULLETIN wishes to congratulate the members whose unflinching efforts have made this Exhibition possible. That their work was crowned with success is amply demonstrated by even the most cursory glance at the handiwork. In spite of apparently insurmountable obstacles they have forged ahead to a bigger success than ever before.

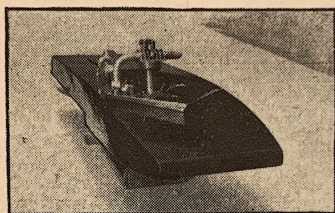
To use the politicians phrase, we 'point with pride' to their efforts.



All Aboard !!



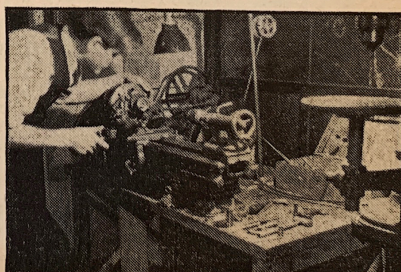
A Double header



Winner of the President's Cup



A Yard Switcher



Another One in the Making

Complexity of Models Necessitates Modern Shop

The space limitations of the modern dwelling and the increasing cost of modern machine tools led to the formation of the N.Y.S.M.E. Shop.

Here are grouped the power tools generally used in metal and wood-working with facilities for the stor-

age of hand tools owned by members. A number of benches provide an adequate place to work and everything to help the modelmaker is present.

With the increasing complexity of the modelmakers art the use of the lathe, the drill press, the power filing machine and the other types of machines becomes imperative and without these the more advanced type of model is nearly impossible.

The shop, both as a place to work and as a source of these important tools, is becoming a more important factor in the daily activities of the members.

For the man who at present is not qualified to operate the various tools in the shop there are held at frequent intervals instruction periods where the beginner is taught the use of the different tools.

RAILROAD PICTURES

Superior Photographs for Discriminating
Picture Collectors and Model Builders

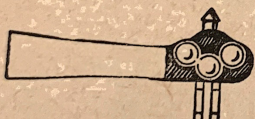
Send For Our Big Free Catalog

LOCOMOTIVE PICTURE in COLORS

A 10x26 full color print of the N. Y. C. 4-6-4 type No. 5297, folder giving history and specifications included, 50c. (75c in Canada)

H. O. BAILEY STUDIOS

811 Cherry Street Philadelphia, Pa.



*"The Magazine that's
a Hobby in Itself"*

10 ILLUSTRATED FEATURES

ENGINE ROSTERS

MODEL BUILDING

Department

INTERNATIONAL ENGINE

PICTURE CLUB

RAILROAD

144
PAGES

STORIES 15c

March Issue Now on Sale

Development of "OO" Gauge

The "OO" Gauge has been developed, through a number of years, from an obscure beginning into the present practical standard. At first the scale used was $\frac{1}{8}$ in. to the foot, then $3\frac{1}{2}$ mm., and at present 4 mm. has found favor with the majority interested in this size.

Material can now be gathered more readily, especially a powerful electric motor, yet small enough to fit into almost any type of motive power.

The Modelmaker

All Types of Working Models

The Model Railroader

Exclusively Model Railroading

Two magazines edited just for model makers and model railroaders. See just one issue and you'll want one or both regularly. Sample copy of either, 15c; of both, 25c.

SEE OUR EXHIBIT

THE MODELMAKER CORP.

BOX 215-N

WAUWATOSA, WIS.

Largest Collection of Models

Continued from page 1

however, to analyze the general trends as exemplified by the contents of this year's exhibition. It will be noticed that the models give a broad panorama

SPARE TIME IS HOBBY TIME!

Modelers Headquarters

We carry a complete line of model builders supplies airplane, ship and boat model kits, fittings and power tools. Gasoline, dry ice and compressed air engines. AT LOWEST PRICES!

POLK'S MODEL CRAFT HOBBIES, Inc.

421 Seventh Avenue
2nd Fl., Entr. on 33rd St.
New York City

263 Halsey Street
near William St.
Newark, N. J.

Send 3c for illustrated catalog. Send name for announcement of our complete line of R. R. equipment.

AUTOMATIC COUPLERS

For 17/32 Scale Model Railways

PRICE 25c EACH

WARREN FLEENOR STAFFORD
NEW YORK

Free Lists of other Parts

LIST OF ADVERTISERS

| ADVERTISER | PAGE NO. |
|----------------------------|------------|
| Model Switch & Signal Co. | 2 - 10 |
| A. C. Colby Machinery Co. | 3 |
| Gene's | 4 |
| Miniature Locomotive Co., | 4 |
| Chicago Wheel & Mfg. Co. | 4 |
| H. O. Bailey Studios | 8 |
| Railroad Stories Magazine | 8 |
| Modelmaker Corp. | 8 |
| Adept Tool Company | 9 |
| Warren Fleenor | 9 |
| Polk's Model Craft Hobbies | 9 |
| International Midland | 10 |
| Howard Engine & Mfg. Co. | 10 |
| Crovan Railway Models | 10 |
| Shaw Railroad Models | 10 |
| Boucher Playthings | 11 |
| Patterson Brothers | 11 |
| American Power Tool Corp. | 11 |
| The Dewey Press | 4 - 9 - 10 |

of the transportation and power fields. In these fields of human endeavour the keynote is action. The imagination of the modelmaker has been captured by this action and he attempts to capture in his reproduction in miniature the action that characterizes the prototype. Thus having defined certain of these fields of endeavour as the "action" fields, we must now speak of the remainder of our category, or the static fields.

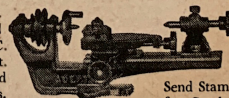
These are also represented in the models on display and very seldom stand alone as an entity, but usually serve as a background to complete the picture and to accentuate the dynamics of the other models.

For a catalog that will sell your products write to The Dewey Press, Dept. E, 374 Fulton Street, Brooklyn, N. Y. They can and will produce printed matter of noteworthy character and definite appeal at prices within the reach of all.

"ATTENTION" "O"

GAUGE ELECTRIC

RAILWAY BUILDERS --- ADEPT MODEL MAKER'S LATHE and Sensitive Drill are tools you need to build your own locomotives, cars and signal equipment. Accurate and Practical 3 1/4" Swing, 6" C to C. Compound slide rest. Milling attachment and a full line of accessories.



Adept Tool Co., 1342 Hampton Rd., E. Cleveland, O.

LATHE
WITH
SLIDE
REST
\$14

Send Stamp
for Catalog

HAMMERMILL BOND CABINETS

PRINTED

100 sheets
100 envelopes \$2.50

SHEET SIZE 7 1/4 X 10 1/2
White Only: Bond, Ripple, Laid Antique Finish

THE DEWEY PRESS

374 FULTON ST., Dept. G, BROOKLYN, N.Y.

Trade Firms Assist Modelmaker To Get Material

Make Present Models Possible

Embarking on the construction of a model the average model engineer is guided in his planning and building by the following considerations: the factual data, photographs, and blueprints, of the prototype; availability and source of the required materials and parts; and the tools and equipment, and his skill to employ them.

While to the large extent the contact with others in his hobby fosters

SCENERY

The **INTERNATIONAL MIDLAND** is a service for enhancing Model Railroads

Brick and Stone papers, Trees, etc.

14-S Ellsworth Ave. Oliver Whitwell Wilson
Yonkers, N. Y. Business Manager
10c will bring samples and catalog material

CATALOGS PRINTED

THE DEWEY PRESS

374 FULTON ST., Dept. E, BROOKLYN, N. Y.

MODEL ENGINES

Blue prints of Locomotives and other kinds of engines and machines, etc. . . . Listing Engines, Castings, Drills, Taps, Dies, Gears, Tubing, Gauges and Materials of all kinds.

Large Catalog 10c--Refunded on first order

HOWARD ENGINE & MFG. CO.
Dept. G, 2417 N. Ashland Ave., Chicago, Ill.

"O" Gauge

$\frac{1}{4}$ " Scale

LOCOMOTIVES BUILT TO ORDER

Reenforced Sheet Aluminum Passenger
Cars a Specialty

Cast Aluminum Freight Cars

A full line of "O" Gauge railway supplies carried in stock
CIRCULAR TEN CENTS

CROVAN RAILWAY MODELS
201 Summer Street - Stamford, Conn.

the gathering of photographs and plans, it is to the trade he must turn for the important materials required.

In the not so distant past proud model builders boasted of constructing the model 'from ground up.' They were obliged to, for trade concerns had little to offer, and all materials had to be gathered piece-meal wherever found.

Original plans had to be rescaled and simplified, or the dimensions taken from the prototype. Photographs were scarce and hard to obtain. Patterns had to be made, and a foundry, competent to cast, found.

Then followed a long search for the suitable metals, cross-sections and gauges required and also for small thread sizes, boiler fittings and sundries.

While some modelmakers own machine tool aids, the majority as yet, particularly the beginner, uses but simple hand tools.

To simplify construction, complete kits have become popular, which makes possible the purchase of required parts for a variety of models.

Today all the experience of the past in design, construction and development on a host of popular models are available to model enthusiasts old and new. For any problem, for the latest in equipment and ideas, and where to get them, consult—The Trade.

SHAW RAILROAD MODELS
SAMUEL SHAW

MODEL CARS and TRUCKS

541 PENN AVE. DREXEL HILL, PA.



**COLOR LIGHT
SIGNALS**

**INTERLOCKING
EQUIPMENT**

Chatting with the Trade

Continued from page 2

The Handee, tool of a thousand and one uses, is being offered to model makers for only \$10.75 with three accessories by the Chicago Wheel & Manufacturing Company, 1101-C Monroe Street, Chicago, Ill. The Handee is a small grinder which is used to do all those tedious little jobs around models of all descriptions.

Any tools or materials that a model maker might need can be bought at Patterson Brothers, 27 Park Row, New York City. They also offer a number of lists, a pamphlet and a catalog for model makers.

A plan brought forward by The Dewey Press provides a way to have the Exhibition Guide of your model club produced at little or no cost to the club. For particulars write Dept. E. G., 374 Fulton Street, Brooklyn, N. Y.

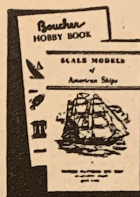
As you browse around the varied displays at the Exhibition you will find you have gleaned much to write your friends about. Drop a card at once to The Dewey Press, Department E. G., 374 Fulton Street, Brooklyn, N. Y., asking for samples of the *special* offer of Hammermill Bond stationery. This

stationery is in itself a compliment to your good taste, and The Dewey Press offers to print it for you at little cost. Try it!

Among the many interesting features in the Railroad Stories magazine you will find an Engine Roster, Model

Continued on page 12

Boucher



Model Steam Engines
Boilers and Fittings
Speed Boat Hull Kits

Scale Models:- Blueprints, Kits, Fittings and Supplies for ancient and modern ships.

Racing Model Yachts in kits and models ready to sail.

Send 25c for these two books

BOUCHER—since 1905

Dept. NYS, 126 Lafayette Street, New York City

MODELMAKERS TOOLS AND MATERIALS

Model builders, wood carvers and art metal workers will find our stock a reliable, ready and economical source for their tool, metal and material requirements. All kinds of metals in odd shapes, sizes and lengths. Many other items unavailable elsewhere, we carry.

FREE Send for whichever of the following folders you are interested in. They are all free. 'Metal Artcraft Catalog No. 20' 'Special Anvils and Hammers' 'Stock List of Brass, Copper and Aluminum Tubing' 'Stock List of Brass and Aluminum Channels, Angles, Tees, etc.' 'Stock Lists of Brass and Aluminum Model Railroad Tracks'.

PATTERSON BROTHERS

27 PARK ROW, Dept. B, NEW YORK, N. Y.

9"x30"—36"—48" PRECISION METAL LATHE

\$14.95

Precision heavy-duty professional equipment has finally been brought within the price-range of the small shop by 'AMERICAN' engineers. Lathes guaranteed accurate within .001", hollow spindle, lever-action tail-spindle, bushed bearings; hand-feed entire length of bed; bed ground and polished steel; attachments of all types for all trades available at correspondingly low prices. Extras include tail-stock drill-chuck \$1.25; 6" face-plate \$2.75; toolholder \$1; countershaft \$6.75. 30" overall length for 30" length add \$1.50; for 48" add \$3.50. ATTACHMENTS FOR GEARED AUTOMATIC REVERSIBLE POWER FEED

.003" per rev. and gears for cutting 12, 13, 24, 36, 48, 72 and other threads, \$9.85. Additional GEAR-TRAIN to cut ALL threads 7 to 84, \$5.20. Send 25¢, shipped COD for balance, FOB, N. Y., Wt., 80 lbs.

FREE

24-page CATALOG of other accessories and entire line of nationally low-priced power tools, and '72 WORKSHOP' PROJECTS AND PLANS."

AMERICAN POWER TOOL CORP., 80 T 4th Ave., New York, N. Y.

PARTS FOR
AUTO-FEED
AND
SCREW CUTTING
\$9.85

Chatting with the Trade

Continued from page 11

Building Department and their famous Engine Picture Club. The March issue of Railroad Stories is now on the newsstands with 144 pages crammed with pure railroading.

Model steam engines, boilers and fittings, speed boat hull kits and many other interesting items are listed by Boucher, 126 Lafayette Street, New York City, in two books which they offer for 25 cents.

You should have the big catalog which the Howard Engine & Manufacturing Company, Dept. G, 2417 North Ashland Avenue, Chicago, has ready to send you for 10c—to be refunded on your first order.

Railway builders in "O" gauge will

LIST OF COMMERCIAL EXHIBITORS

| BOOTH NO. | EXHIBITOR |
|-----------|-------------------------------------|
| 1A—1 | Miniature Locomotive Co. |
| 2—3 | American Model R. R. Co. |
| 4 | Icken Model Co. |
| 5A | Crovan Model Railway Models |
| 5B-6-7A | Model Craftsman — Hobby-Craft Store |
| 7B | The Fixen Line |
| 9—10 | A. W. Gerstner |
| 11B | H. W. Dalrymple |
| 12 | F. S. Spon, Modelmaker Corp. |
| 13 | American Power Tool Corp. |
| 14 | Model Railroad Shop |
| 15A | Carl C. Auel |
| | Wall Space not numbered |
| | Donald M. Tiffany |
| | Patterson Brothers |
| | Mantua Toy & Metal Prod. Co. |
| | Richard Maerklin Co. |

be interested in a lathe that is being marketed by the Adept Tool Company, 1342 Hampton Road, East Cleveland, Ohio. They claim their lathe with slide rest—at \$14.00—is accurate and practical.

Precision heavy-duty professional equipment has finally been brought within the price range of the small shop by American Power Tool Corp., 80-T Fourth Avenue, N. Y. C. Their lathe selling at \$14.95 is guaranteed accurate to .001". They also have attachments for auto-feed and screw cutting at only \$9.85.

Yes, there is now a real model headquarters in New York City under the guidance of a man capable of the task. Polk's Model Craft Hobbies, Inc., has a complete line of model builders supplies, airplane, ship and boat model kits, fittings and power tools. They expect to handle model railway equipment in the future. Their stores are located at 421 Seventh Avenue in New York City and 263 Halsey Street in Newark, N. J.

Blue prints with directions on how to make many old-time clipper ships, battle ships and many other models can be obtained from Gene's Dept. E, 510 East 11th Street, New York City. They also have hundreds of fittings in brass, white-metal and boxwood.

Listed in the circular that is being distributed for ten cents by Crovan Railway Models are reinforced sheet aluminum passenger cars and cast aluminum freight cars built to quarter scale. They also build model locomotives that are actually to scale. Of course they have a full line of "O" Gauge railway supplies always in stock.