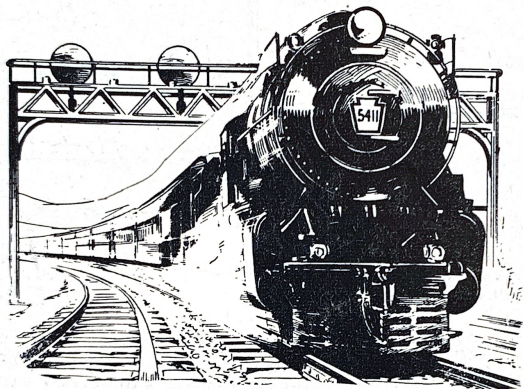


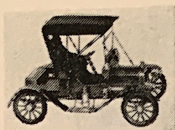
Twenty Third
ANNUAL EXHIBITION



1 9 5 2

New York Society of Model Engineers
Hoboken, N. J.

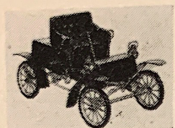
founded 1926



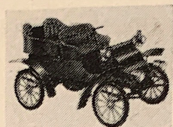
1911 Maxwell, \$2.50
Length 7½"



1902 Franklin, \$2.50
Length 7"



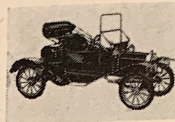
1900 Packard, \$2.50
Length 6¾"



1903 Cadillac, \$2.50
Length 7"



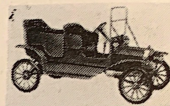
1913 Mercer Raceabout, \$3.95
Length 9¼"



1910 Model "T"
Ford, \$2.50
Length 8"



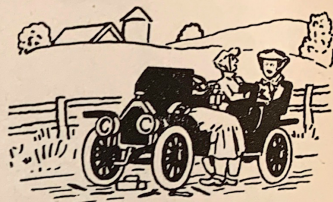
1903 Rambler,
\$2.50
6½" long



1909 Model "T" Ford, \$2.95
Length 8"

hudson miniatures OLD TIMERS

"Originators of Antique Autos in Miniature"



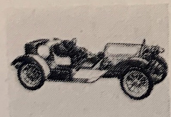
Hudson Miniatures offers "Old Timers," the original antique autos in miniature. Here is a hobby that is truly sweeping the country. For oldsters and youngsters, the creation of these early model automobiles in exact ¾" scale is simple and easy. Each of the 16 famous antique cars pictured here is exquisitely detailed and measures from 6" to 10½" in length when completed. They are authentic, historical and educational. See these interesting and unusual models that the whole family will enjoy building.



1911 Buick
"Bug," \$2.50
Length 7½"



1906 Columbia
Electric, \$2.50
Length 6½"



1914 Stutz
Bearcat, \$3.95
Length 10½"



1906 "Old 16"
Locomobile, \$3.95
Length 10"

Hudson Miniatures' "Old Timer" kits are prefabricated with ready-shaped parts, including cast wheels, horns, radiators and complete, step-by-step plans and instructions.



1904 Oldsmobile,
\$1.95
Length 6"



1903 Model "A" Ford,
\$2.50
Length 8"



1909 Stanley Steamer,
\$2.95
Length 8"



1910 International
Harvester, \$2.95
Length 8½"

SCRANTON HOBBY CENTER

Dept. 69
Scranton, Pa.

N. Y. S. M. E. BULLETIN

Published in the Interest of Modelmaking by

NEW YORK SOCIETY OF MODEL ENGINEERS, Inc.

LACKAWANNA TERMINAL

HOBOKEN, N. J.

Telephone: HOBoken 4-9120

Organized 1926

Volume 15

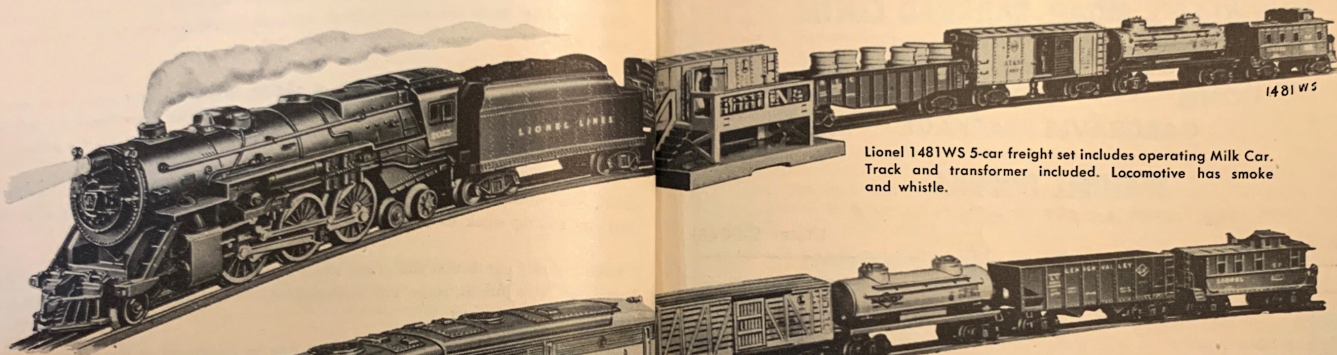
No. 1

The officers and members of the New York Society of Model Engineers extend a hearty welcome to our 22nd Annual Exhibition. This Exhibition marks the beginning of the second quarter of a century of leadership of the New York Society of Model Engineers in the model making field. Our Exhibitions have been a concentrated effort to bring the best examples of the model builders' efforts to the attention of the public and of our many friends.

At these Exhibitions you will see the handiwork of amateurs and professionals both in and outside the Society. A close examination of many of these models will reveal in some cases the workmanship of men professionally skilled in the art of working with fine precision tools, and in other cases equally delicate and neat craftsmanship of those who, although in their daily life are removed from the machine shop, are spurred on by ambition to produce worthwhile models. We hope you enjoy these outstanding models we have assembled from many fields and that you will obtain a better appreciation of the detailed care, patience and skill required to make even the most simple model.

LIONEL is first in operating realism

Look to Lionel for the operating features that make model railroading really fascinating ... real railroad knuckle couplers that open remote control ... amazing Magna-Traction for super pull, climb, performance ... puffing smoke, two-tone, built-in whistles ... coal loaders, lumber loaders, automatic caphores, block signals. See Lionel for operating realism that makes model trains like the real ones!

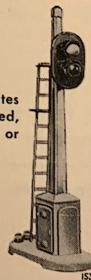


Lionel 1481WS 5-car freight set includes operating Milk Car. Track and transformer included. Locomotive has smoke and whistle.

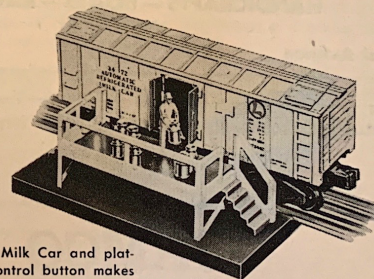
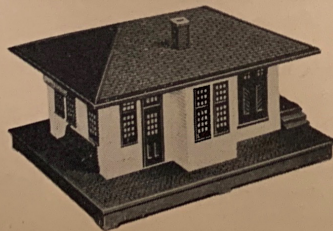


Lionel 1467W Union Pacific 4-car freight set. Diesel has realistic horn. Track and transformer come with set.

Lionel No. 153 signal operates automatically. As train has passed, light turns red and will slow or stop following train.



Lionel No. 132 Station stops trains automatically, then, after an interval, permits them to proceed. Time of train stop is adjustable.



Lionel No. 3472 operating Milk Car and platform. Pressure of remote control button makes tiny milkman deliver milk cans one by one on platform.

THE LIONEL CORPORATION 15 E. 26th St., New York 10, N.Y.

Architectural Models

A model railroad of the magnitude of the Union Connecting Railroad requires the construction of innumerable architectural models.

One outstanding model of this type, the model of the Lackawanna Railroad Passenger Terminal Building in Hoboken, in which the Society's quarters are located, has been fabricated almost entirely of cardboard and represents almost four years of detailed care, patience and skill.

Many other models of this type are still required in the scenic effects to be built in the Union Connecting Railroad.

BROOKLYN'S MODEL RAILROAD CENTER

ALL GAUGES — KITS and ACCESSORIES

LIONEL

AMERICAN FLYER

GARGRAVES TRackage

WALDELL HOBBIES

1622 NEWKIRK AVE. (Cor. E. 17th St.)

Brooklyn 26, N. Y.

ULster 9-0048

JO. 2-1551



MANN'S HOBBYCRAFTS

RAILROADS — AIRPLANES — MODELS
HANDICRAFTS — BOATS — RACE-CARS

225 Central Avenue

Jersey City, New Jersey

Perpetual Success to the N.Y.S.M.E. and all O Gaugers.

Ed Dawson, pres.

Jamco

P.S. We stock all HO & O equipment

JAMCO

JAMAICA CO. HOBBIES, Inc.

90-04 168th STREET
JAMAICA 3, N. Y.

You can see all of these

UNUSUAL NEW RAILROAD BOOKS

in your home for 5 days FREE!

POPULAR PICTURE AND PLAN BOOK OF RAILROAD CARS AND LOCOMOTIVES

New! Big! Nearly 400 selected photos and over 700 scale drawings from the Simmons-Boardman Locomotive and Car Builders' Cyclopedias — at less than a third of their cost! Includes over 70 locomotive types (steam, diesel-electric, electric, and turbine); dozens of car types; extensive data on trucks, couplers, brakes, boilers, engines, etc. 288 p. over 1100 ill. 8 x 11½. cloth. \$5.95

THE COMPLETE BOOK OF MODEL RAILROADING

Full and expert coverage of all aspects of the hobby. Contents: What It Is All About. The Story of Model Railroading. Important Choices. Track and Tables. Planning a Layout. Motive Power and Rolling Stock. Building Locomotives and Cars. Power and Control. Signals and Automatic Accessories. Buildings and Right of Way Equipment. Scenery. Specialized Types of Layouts. Realism in Operation. The Model Railroad Hobby. Index. 350 p. 150 ill. 6 x 9. cloth. \$4.95

HANDBOOK OF AMERICAN RAILROADS

Just out — the greatest assemblage of information on Class I railroads ever brought together under one cover! All the Class I railroads in the U. S. (127) are represented. Data for each road include: photo of a crack train; sketch of road's history; thumbnail biography of chief officer; the latest available financial, operating, and equipment statistics; and a specially-drawn map of the road. 256 p. 375 ill. 5½ x 8½. laminated paper over board. \$2.95

U. S. RAILROADS (A Map)

Sized 34" x 44" for wall and desk use. Printed in three colors to show you at a glance the major U. S. railroads divided into six classes: three and four track, double track, single track with CTC, single track with automatic signal installations, other important single track roads, and all other trackage. Electrification indicated. Names of railroads, state boundaries and major cities are shown, as are water areas and special symbols. \$2.50

RIGHTS OF TRAINS

New Fourth Edition just published analyzes the A. A. R.'s Standard Code of Operating Rules paragraph by paragraph, and gives the reasons for each rule to show how it is interpreted and applied under various conditions. *Rights of Trains* rounds out the subject of train rules as presented in the Book of Rules given operating men by the larger railroads. Questions and answers test your judgment in applying the rules. 510 p. 135 ill. 5 x 7¾. cloth. \$4.95

FREE EXAMINATION COUPON

Fill in and Mail Today

Simmons-Boardman Books, Dept. ME52
30 Church Street, New York 7, N. Y.
Send me, on 5 days approval, the publication(s)
checked below:

<input type="checkbox"/>	Popular Picture & Plan Book	-----	\$5.95
<input type="checkbox"/>	Complete Book of Model Railroading	-----	4.95
<input type="checkbox"/>	Handbook of American Railroads	-----	2.95
<input type="checkbox"/>	U. S. Railroads Map	-----	2.50
<input type="checkbox"/>	Rights of Trains	-----	4.95

At the end of 5 days, I will either return the publication(s) and owe nothing, or send you payment at the prices indicated above plus a few cents postage.

Name -----

Street -----

City, State -----

WE'RE REALLY PITCHING!



YES SIR: Railroading is our business

Amongst other things, New York's only Hobby Department Store has the largest model railroad department in the East — five floors of hobbies with the entire 3rd floor devoted exclusively to railroads.

Don't fail to visit us. See our 3 operating layouts, including the longest Maerklin layout in the country. Here you will find a pleasant atmosphere plus courteous, intelligent and efficient service. We take pride in showing some unusual and interesting items which will not be found anywhere else in the U.S.A. We have trains from Italy, Germany, England, France, Belgium, Switzerland and Japan. Come see for yourself: Trix twin trains, Maerklin, Hornby, Bassett-Lowke, Wesa, Jep and Rivarossi. Of course, you'll find everything in Lionel, American Flyer and other domestic lines as well as scale.

SHOP US for bargains in trade-in equipment — save real money — buy a guaranteed used loco or car here — we may have just what you want. If you have any idle equipment trade it with us.

SHOP US for train repairs — absolutely the lowest prices and quickest service on repairs anywhere — all train equipment tested absolutely free of charge.

SHOP US for those hard-to-find extras: scenery, houses and accessories.



POLK'S HOBBIES

314 Fifth Ave. (at 32nd St.), New York 1, N. Y., Phone BRyant 9-9034
Store Hours: Monday through Friday. 9:30 a. m. to 6:30 p. m.
Open till 9:30 p. m. Thurs. eve. Sat. 9:30 a. m. to 6 p. m.

BRASS Rail & Switches

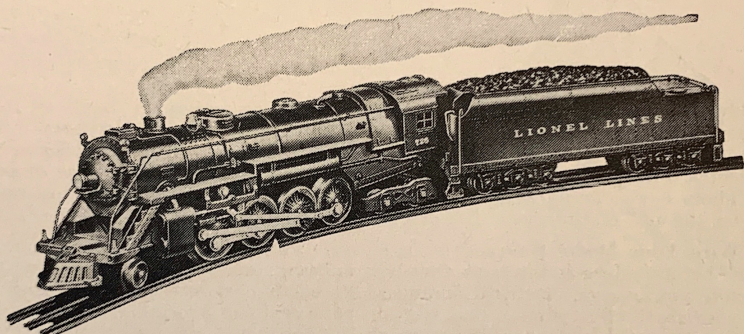
— in ALL gauges —

Prefab-track

Complete line of HO

All scale model R.R.

Accessories



**Largest stock of Lionel
in New Jersey**

Factory service & repairs



You can always do better at

TREASURE HOUSE

27 Passaic Ave.

Just try us — You'll see

Garfield, N. J.

PREScription

R_x

For happier model
railroading, spend a
few hours with these
practical, shop-tested
books.

CC Kalmbach

The Model Railroad Cyclopedia is the biggest and best reference book in the hobby. Everyone finds its galaxy of prototype plans useful. (Even manufacturers follow it in designing new kits.) Locomotives, passenger and freight cars, bridges, trackwork, structures, electric railway cars, and signals are among the hundreds of pieces of equipment shown. There is also an extensive list of model railroad charts and diagrams, and helpful articles on the use of the plans. 184 pages, 27 folding plates. -----\$4.50

How to Wire Your Model Railroad is an entirely new book — nothing having appeared anywhere before. Here is the book that will answer your wiring questions without trying to make you into an electrical engineer. No complications — just the easiest ways to connect your track and trains so that you can have real fun operating. The new, practical material is presented with more than 200 photos and diagrams, mostly in two colors. A dandy gift for only -----\$1.75

Track & Layout describes how to design and build your railroad. There are plans for layouts, yards, terminals and junctions. It describes the use of prototype plans for layouts — with detailed comment and practical suggestions. Detail on building benchwork, trackwork and switches is complete. For smoother operation of your trains ask for **Track & Layout**. -----\$2.00

How to Build Railroad Models is a series of practical, step-by-step construction articles with complete plans, photos and drawings for building cars and structures. Each project has been shop-tested; drawings include dimensional data; photos show model and prototype. The projects include: box, hopper, passenger, wagon-on-top box, refrigerator, tank, gondola, caboose, and gas-electric cars; loading crane, transformer car & load, timber trestle, small station accessories, culverts, grade crossing, track switch, double crossover, three-position semaphore, and switch & signal rodding. -----\$2.00

How to Run a Model Railroad. This is the book which brings thrilling enjoyment to the hobby. It takes you out of the "playing" stage and puts you right in the prototype class. The contents tell how to operate a pike according to prototype methods: freight switching, train make-up, and yard practices; plus the use of timetable & train order. -----\$2.00

Handbook for Model Railroaders outlines the general construction and operating procedures of the hobby. It is designed to help you formulate your own ideas on rolling stock and equipment. Preliminary considerations, materials needed, planning to meet space requirements, NMRA standards, conversion of toy equipment to scale, signaling, and scenery are but a few of its many fundamentals. Revised 4th edition. -----\$3.00